

PERMAGUARD WOOD GRAIN FINISHES

PermaGuard uses the Kynar 500 Paint System to ensure a luxury finish without sacrificing any durability. When using PermaGuard, expect years of endurance with minimal chalking & fading.

7 Layers of Durability:

1. Backside: A primer coating is applied to the back side of the panel to protect from corrosion.

2. Base Metal: Heavy Duty 28g metal helps to hide the imperfections in your wall.

3. Galvalume Base Coat: AZ55 Galvalume Coating provides further protection from corrosion.

4. Primer Coating: Additional corrosion resistance and priming for Kynar 500.

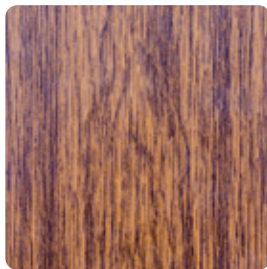
5. Kynar 500: The best coating to provide resistance to chalking & fading.

6. Print Layer: The printed layer providing a beautiful finish & texture.

7. Clear Coat: Durable finish protecting against scuffs and scratches.



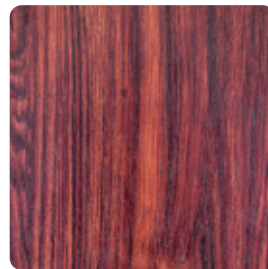
Weathered Wood



Red Oak



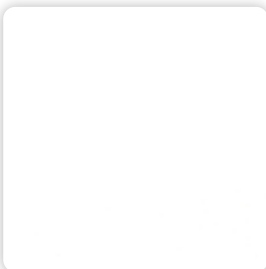
Pine



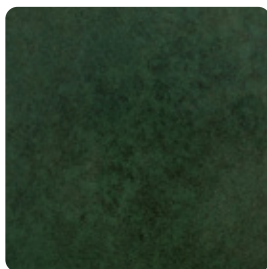
Dark Cherry



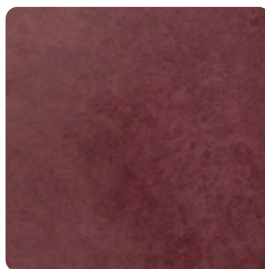
Black



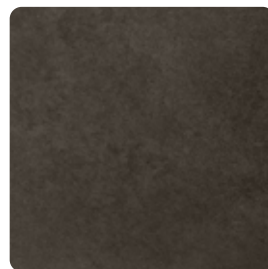
White



Green



Burgundy

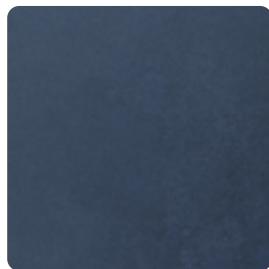


Burnished Slate



Charcoal

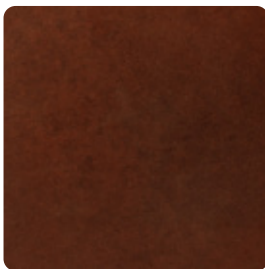
Designer Colors:



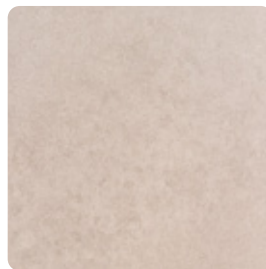
Designer Gallery Blue



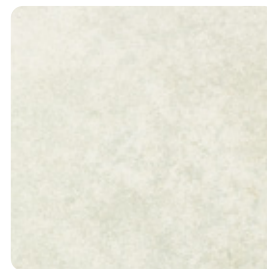
Designer Brown



Designer Red



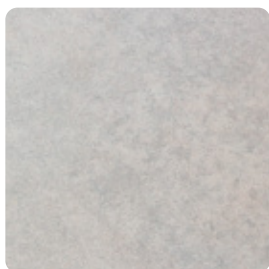
Designer Tan



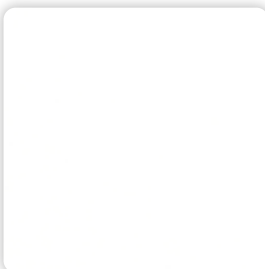
Designer Lt. Stone



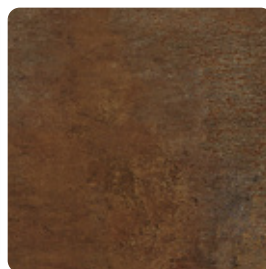
Designer Ash Gray



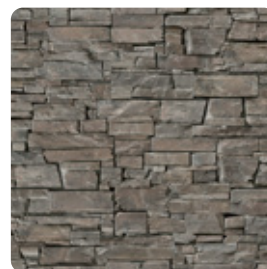
Designer Clay



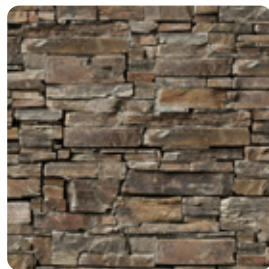
**Designer
Bright White**



**Designer
Vintage Rust**



**Stackstone
Smoke**



**Stackstone
Ash**



**Stackstone
Shadow**



**Mossy Oak
Bottomland Original**



**Mossy Oak
Bottomland**



**Mossy Oak
Country DNA**